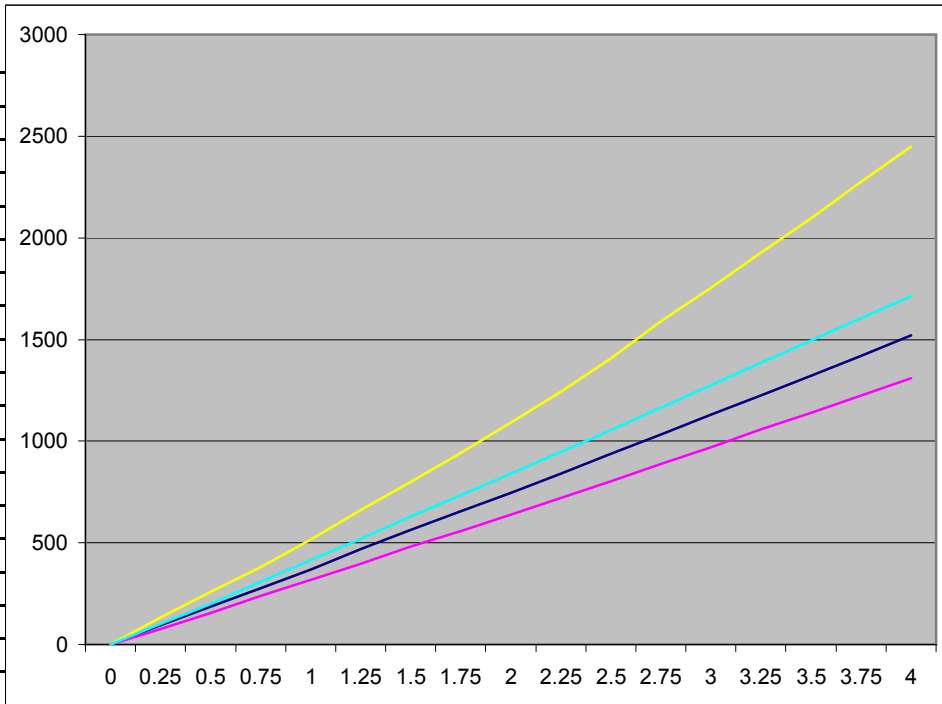


E31 Rear spring comparison

9/14/08

	CI		H&R		Eibach		CSI	
comp		lb/inch		lb/inch		lb/inch		lb/inch
0	0		0		0		0	
0.25	95		75		100		132	
0.5	186		154		198		257	
0.75	277		239		307		382	
1	369	369	318	318	414	414	515	517
1.25	469		398		520		660	
1.5	562		482		629		801	
1.75	656		557		733		940	
2	747	378	638	320	840	426	1092	575
2.25	841		720		947		1244	
2.5	937		804		1056		1408	
2.75	1033		889		1165		1589	
3	1129	383	970	332	1274	435	1752	660
3.25	1225		1057		1384		1928	
3.5	1321		1141		1494		2096	
3.75	1420		1225		1605		2276	
4	1520	398	1310	340	1714	440	2450	698



Ci springs cut in 1/4 Turn increment

	Ci		RD		Dinan			
comp		lb/inch		lb/inch		lb/inch		
0	0		0		0			
0.25	95		60		120			
0.5	186		127		246			
0.75	277		201		406			
1	369	369	277	277	594	594		
1.25	469		354		762			
1.5	562		433		935			
1.75	656		512		1100			
2	747	378	591	314	1254	660		
2.25	841		670		1464			
2.5	937		750		1644			
2.75	1033		830		1821			
3	1129	382	911	320	2002	748		
3.25	1225		991		2184			
3.5	1321		1082		2365			
3.75	1420		1151		2545			
4	1520	391	1233	322	2726	724		

